

XTC SPECIFICATIONS

STYLING

Exterior

Aerodynamic body shape
3mm Silver composite exterior cladding
Extended Checkerplate to front, sides and rear
Camec triple locking door with 2 radius corners
Dometic double glazed windows with integrated blinds and fly screens
Chrome LED Narva Tail Lamps
LED Flood lighting to front and rear

Interior

Modern flush finish solid cabinetry
Soft closing drawers
Coloured Partions
The latest in gloss & matt finish cupboard doors
Extended leather upholstery with extenda seats
Storage alcoves to side of bed
Black Stylish Tap Ware

TECHNOLOGY

BMPRO charger with odyssey touch panel for battery & tank level monitoring
2 x 170 Watt solar panel fitted with digital regulator
2 x 100Amp AGM deep cycle battery
Bluetooth Large Screen DVD/Radio
24" LED television
2 x TV points
Wineguard HV TV antenna
Dometic fan cooled 3 way fridge
Ibis Mk 4 reverse cycle air-conditioning with remote control
Washing machine
Truma ultra rapid stainless steel gas/electric hot water system
Microwave oven with insert surround
External mounted - integrated power inlet with circuit breaker
LED Striplights to kitchen & overhead cabinets
Waeco reverse camera (car kit supplied loose)
Narva LED touch lighting interior dimmable roof lights
12V/USB fittings to robe cubby holes and Dinette
Touch sensitive backlit mirror over vanity (N/A to 705)

SAFETY

ALKO drop down corner stabilisers
ALKO electric brakes to all wheels
Brakesafe breakaway safety system
Fire extinguisher
Smoke detector featuring hush button
Gas regulator and A-frame tap protective covers
Lockable security door

CONVENIENCE

Dual 9kg gas bottles
Extractor fan hatches fitted over toilet and shower
Raised fridge
Hydraulic table legs to club lounge models
Fold down picnic table
Cutlery tray fitted to kitchen drawer
Common outlet for all waste water
Water tap fitted to A frame with stone guard
External TV entertainment box with Fusion speakers (N/A 705)

External shower tap set
China bowl toilet
Exterior annex lights (2 or 3 x doorside layout dependent & 1 x road side)

NUTS AND BOLTS

Supergal Chassis with extended A-frame
D035 Coupling
ALKO Enduro Cross Country suspension (550 mdl-Enduro X)
Toolbox fitted to A-Frame with slide out
Trail A Mate Hydraulic Jack
All terrain tyres with stylish alloy wheels (N/A to 550)
Pull out door step
Bumper bar with spare wheel mounted

 **CONCEPT** CARAVANS



PRACTICALITY

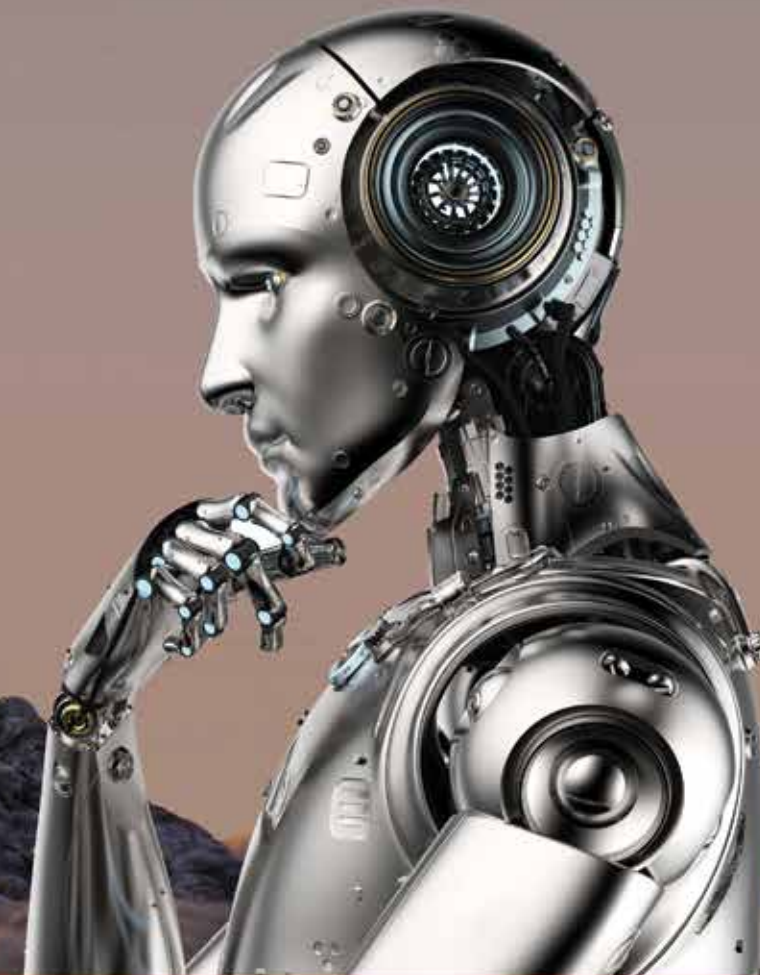
6'8" Internal Height
Concept 'Power Management Cabinet'
Fibreglass batt insulation to roof
Styrofoam insulation to walls
Spacious fully enclosed fibreglass shower to ceiling height
Towel rail, ring and toilet roll holder fitted to ensuite
Recessed Oven with electric hotplate
French made high wear floating vinyl flooring
Internal and external handles at entry
Water filter and tap
Grey water tank
Fiamma Bike Rack fitted to Rear Wall STD to family vans (bunk dependant)
Full tunnel boot (N/A 705)



www.conceptcaravans.com.au



CARAVANNING EVOLUTION AT ITS BEST



XTC - built for exploring

 **CONCEPT** CARAVANS
[YOUR TIME IS NOW]

THE XTC

At Concept Caravans, we're committed to maintaining our highly prized reputation of being producers of the highest quality caravans. The XTC is the evolution of over 15 years of the Concept range, delivering a new personality of it's own. The XTC is manufactured to the exacting standards that are now expected of all Concept Caravans, who are known in the industry for their superlative build quality and are widely recognised as the company that manufactures the caravanner's caravan. The XTC has been designed and built for long term touring in luxury and comfort. The spacious, luxurious interiors are complemented by stylish flush finished furniture, extended upholstery, practical exterior features incorporate silver composite cladding, extended checker plates, triple locking doors and double-glazed windows, sitting atop a Supergal chassis fitted with ALKO independent suspensions, ensuring the most pleasurable travel and accommodation.



The Interior



For more photographs & 3D tour, visit CONCEPTCARAVANS.COM.AU

550



600



630



700

